

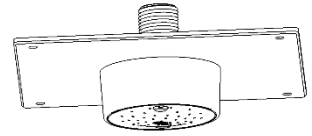
Product Installation Guidelines

Version 1, 17 November 2022, Page 1 of 4

GalvinCare® CP-BS Lead Safe Mental Health Anti-Ligature Ceiling Mounted Shower Rose Stainless Steel Plate

PRODUCT CODES:

- **121.70.10.00**



SPECIFICATIONS

- The GalvinCare® Mental Health Ceiling Mounted Shower Rose provides anti-vandalism and anti-ligature features.
- Used extensively in high risk, high security applications such as prisons, correctional facilities, and detention centres.
- Constructed from heavy duty components and comes complete with special tamper resistant screws.
- For use with high pressure plumbing systems between 150 & 500kPa.
- Special consideration may be required when used with low water pressure systems and components.
- Chrome plate finish for easy cleaning and added durability
- Lead Safe™ brass construction*

IMPORTANT: All GalvinCare® vandal resistant ceiling mounted shower roses are tested in accordance with AS/NZS 3662 and leave our premises in good working order.

*As 'lead free' is not currently defined by law in Australia and New Zealand, we have based our definition of Lead Safe™ on the requirements of s1417 of the USA's Safe Drinking Water Act (SDWA) and the relevant US standards NSF61 / NSF372. The SDWA defines 'lead free' as "not more than a weighted average of 0.25% lead when used with respect to the wetted surface of pipes, pipe fittings, plumbing fittings and fixtures".

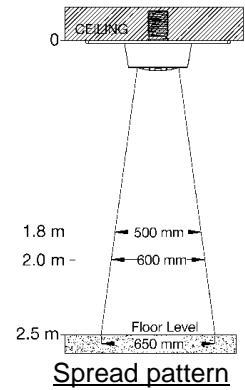
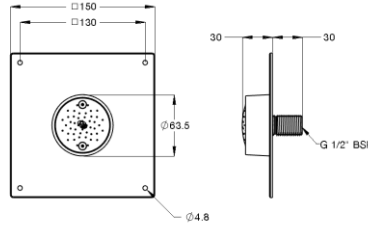
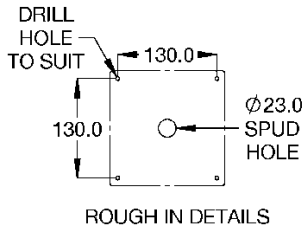
TECHNICAL DATA

Inlet	1/2" BSP - Male	
Outlet	Shower Rose	
Headwork	N/A	
Working Pressure Range (kPa)	Min	150
	Max	500
Working Temperature Range (°C)	Min	5
	Max	70
Nominal Flow Rate (LPM)	6.6	
Finish	Chrome	

NOTE: Galvin Specialised continually strive to improve their products. Specifications may change without notice.

PRE-INSTALLATION - MOUNTING DETAILS – HOLE CENTRES

- If the mounting holes do not already exist, mark out and drill the holes as shown in face plate hole dimensions. Ensure drill to suit suitable mounting methods.
- Recommended installation height above floor level is 2 metres (6'6"). Spread pattern using mains pressure 500kPa as shown in side image

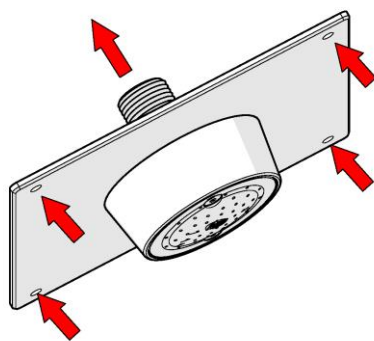


INSTALLATION

INSTALLATION COMPLIANCE: Galvin Specialised products must be installed in accordance with these installation instructions and in accordance with AS/NZS 3500, the PCA and your local regulatory requirements. Water and/or electrical supply conditions must also comply to the applicable national and/or state standards. Failing to comply with these provisions shall void the product warranty and may affect the performance of the product.

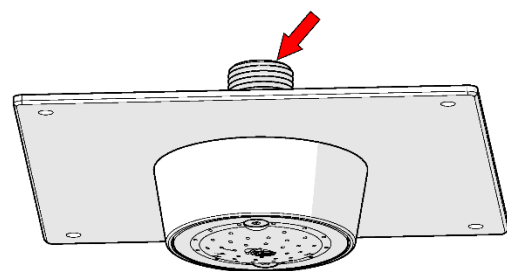
IMPORTANT: Whilst our product designs take into account a broad range of installation types and surfaces, it is important that surfaces which fixtures are mounted to are flat and free from defect. Additionally, ensure any protruding connecting thread is square to the wall so that the outlet sits flat against the wall when installed, ensuring that there are no gaps between the wall and outlet. This is especially important when installing product ranges that have been designed for correctional and health facilities, where special attention is required to minimise ligature points and areas for concealment of contraband. In addition to ensuring the products are fitted securely and in accordance with the following instructions, consideration shall be given to the use of non-pick mastics such as BASF Sonolastic "Ultra" to ensure a high quality and safe installation.

FRONT MOUNTING



1. Secure shower assembly

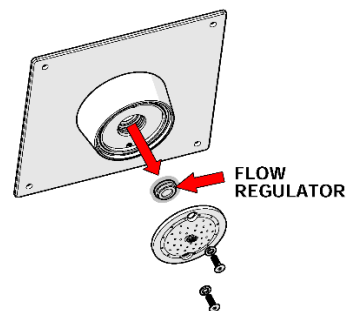
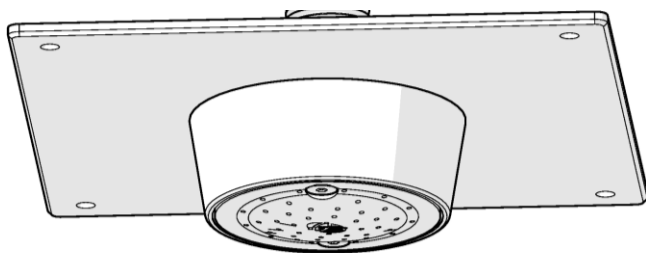
- Fit the shower assembly into ceiling cut out spud hole.
- Secure shower assembly with suitable fastenings as shown.



2. Connect the water line

- Connect water supply to the inlet.
- Use suitable sealant to prevent leaks.

TESTING



- Turn on water supply, inspect the shower and check for any leaks.

Note: Never operate without a flow restrictor, as GalvinCare® Vandal Resistant Shower Rose will deliver full mains pressure with unrestricted flow.

TROUBLESHOOTING

PROBLEM	CAUSE	RECTIFICATION
Wall shower is dripping water	Head-works are worn or damaged	Remove and inspect the head-works, remove debris and replace head parts if damaged
Wall shower has inconsistent flow	Blocked flow restrictor	Remove flow regulator from the body and remove debris. Install an inline strainer to stop further blockages.
Leak from behind body	Insufficient sealant	Apply more sealant

WARRANTY

The warranty set forth herein is given expressly and is the only warranty given by the Galvin Engineering Pty Ltd. With respect to the product, Galvin Engineering Pty Ltd makes no other warranties, express or implied. Galvin Engineering Pty. Ltd. hereby specifically disclaims all other warranties, express or implied, including but not limited to the implied warranties of merchantability and fitness for a particular purpose.

Galvin Engineering Pty Ltd products are covered under our manufacturer’s warranty available for download from www.galvinengineering.com.au Galvin Engineering Pty Ltd expressly warrants that the product is free from operational defects in workmanship and materials for the warranty period as shown on the schedule in the manufacturer’s warranty. During the warranty period, Galvin Engineering will replace or repair any defective products manufactured by Galvin Engineering without charge, so long as the terms of the Manufacturer’s warranty are complied with.

The remedy described in the first paragraph of this warranty shall constitute the sole and exclusive remedy for breach of warranty, and Galvin Engineering Pty Ltd shall not be responsible for any incidental, special or consequential damages, including without limitation, lost profits or the cost of repairing or replacing other property which is damaged if this product does not work properly, other costs resulting from labour charges, delays, vandalism, negligence, fouling caused by foreign material, damage from adverse water conditions, chemical, electrical or any other circumstances over which Galvin Engineering has no control. This warranty shall be invalidated by any abuse, misuse, misapplication, improper installation or improper maintenance or alteration of the product.